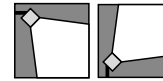


220-240V
50/60 HzIK
09IP
65

Modern floodlight for LED light source.

TECHNICAL DATA**Mounting:** on the adjustable holder, on the substrate**Body:** high pressure die-cast aluminum**Lateral Surface Wind Exposed:** 0.163 m²**Colour:** gray**Diffuser:** tempered glass**ELECTRICAL DATA****Power supply efficiency:** >92%**Power:** 220-240V 50/60Hz**Includes light source:** yes**Type of equipment:** STANDARD, EASY CONNECT**Electrical connection:** max 3x2,5 mm² wire**OPTICAL DATA****Light distribution:** circular, asymmetric-narrow, asymmetric-wide**Way of lighting:** direct**Type of optic:** lens**GENERAL DATA****Lifetime (L80B10):** 100 000 h**Available on request:** LLOC, DALI, DIM 1..10V**Warranty:** 5 years**Application:** roads, industrial facilities, warehouses, metro, parking areas, facades

| Code | Beam angle | Luminaire power [W] | Lumen luminaire [lm] | Efficacy [lm/W] | Colour temperature [K] | CRI/Ra | Operating temperature range [°C] |
|---------------------------------|-------------------|---------------------|----------------------|-----------------|------------------------|--------|----------------------------------|
| Type: High efficacy | | | | | | | |
| 120202.5L121.1X | 25° | 77 | 12550 | 163 | 4000 | >70 | -40 ... +35 |
| 120202.5L131.1X | 25° | 107 | 16800 | 157 | 4000 | >70 | -40 ... +35 |
| 120202.5L091.1X | 25° | 155 | 24200 | 156 | 4000 | >70 | -40 ... +35 |
| 120202.5L121.2X | 50° | 77 | 12300 | 160 | 4000 | >70 | -40 ... +35 |
| 120202.5L131.2X | 50° | 107 | 16600 | 155 | 4000 | >70 | -40 ... +35 |
| 120202.5L091.2X | 50° | 155 | 23950 | 155 | 4000 | >70 | -40 ... +35 |
| 120202.5L121.3X | asymmetric-narrow | 77 | 12600 | 164 | 4000 | >70 | -40 ... +35 |
| 120202.5L131.3X | asymmetric-narrow | 107 | 16900 | 158 | 4000 | >70 | -40 ... +35 |
| 120202.5L091.3X | asymmetric-narrow | 155 | 24400 | 157 | 4000 | >70 | -40 ... +35 |
| 120202.5L121.4X | asymmetric-wide | 77 | 11950 | 155 | 4000 | >70 | -40 ... +35 |
| 120202.5L131.4X | asymmetric-wide | 107 | 16100 | 150 | 4000 | >70 | -40 ... +35 |
| 120202.5L091.4X | asymmetric-wide | 155 | 23250 | 150 | 4000 | >70 | -40 ... +35 |
| Type: Standard luminaire | | | | | | | |
| 120202.5L011.1X | 25° | 155 | 21250 | 137 | 4000 | >70 | -40 ... +35 |
| 120202.5L021.1X | 25° | 155 | 21250 | 137 | 5700 | >70 | -40 ... +35 |
| 120202.5L031.1X | 25° | 155 | 20250 | 131 | 6500 | >70 | -40 ... +35 |
| 120202.5L011.2X | 50° | 155 | 20700 | 134 | 4000 | >70 | -40 ... +35 |
| 120202.5L021.2X | 50° | 155 | 20700 | 134 | 5700 | >70 | -40 ... +35 |
| 120202.5L031.2X | 50° | 155 | 19700 | 127 | 6500 | >70 | -40 ... +35 |
| 120202.5L011.3X | asymmetric-narrow | 155 | 20300 | 131 | 4000 | >70 | -40 ... +35 |
| 120202.5L021.3X | asymmetric-narrow | 155 | 20300 | 131 | 5700 | >70 | -40 ... +35 |
| 120202.5L031.3X | asymmetric-narrow | 155 | 19350 | 125 | 6500 | >70 | -40 ... +35 |
| 120202.5L011.4X | asymmetric-wide | 155 | 20050 | 129 | 4000 | >70 | -40 ... +35 |
| 120202.5L021.4X | asymmetric-wide | 155 | 20050 | 129 | 5700 | >70 | -40 ... +35 |
| 120202.5L031.4X | asymmetric-wide | 155 | 19100 | 123 | 6500 | >70 | -40 ... +35 |

Luminous flux tolerance +/- 10%.

Power tolerance +/- 5%.

Lighting beam, light intensity distribution and light efficiency were examined in accordance with the EN ISO 17025:2005 norm for EN13032 norm series and the LM-79 norm.

Up-to-date product info and General Warranty Terms available on our website www.luglightfactory.com

Detailed information on luminous fluxes and powers for individual indexes are indicated on the product data sheet.

The parameters in the data sheet are given for Ta=25°C.

Colour temperature tolerance +/- 5%.

120202.5L011.1



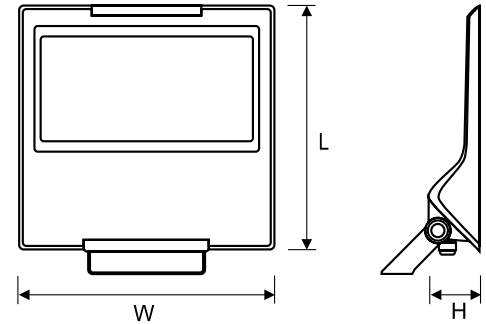
Type of equipment

- 1 STANDARD
- 2 EASY CONNECT

| Code | Dimensions [mm] L W H | Pallet quantity | Quantity in package | Net weight [kg] |
|----------------------------|--------------------------|--------------------|------------------------|--------------------|
| Type: High efficacy | | | | |
| 120202.5L121.1X | 403 405 95 | 24 | 3 | 8.8 |
| 120202.5L131.1X | 403 405 95 | 24 | 3 | 8.8 |
| 120202.5L091.1X | 403 405 95 | 24 | 3 | 8.8 |
| 120202.5L121.2X | 403 405 95 | 24 | 3 | 8.8 |
| 120202.5L131.2X | 403 405 95 | 24 | 3 | 8.8 |
| 120202.5L091.2X | 403 405 95 | 24 | 3 | 8.8 |
| 120202.5L121.3X | 403 405 95 | 24 | 3 | 8.8 |
| 120202.5L131.3X | 403 405 95 | 24 | 3 | 8.8 |
| 120202.5L091.3X | 403 405 95 | 24 | 3 | 8.8 |
| 120202.5L121.4X | 403 405 95 | 24 | 3 | 8.8 |
| 120202.5L131.4X | 403 405 95 | 24 | 3 | 8.8 |
| 120202.5L091.4X | 403 405 95 | 24 | 3 | 8.8 |

Type: Standard luminaire

| | | | | |
|-----------------|------------|----|---|-----|
| 120202.5L011.1X | 403 405 95 | 24 | 3 | 8.8 |
| 120202.5L021.1X | 403 405 95 | 24 | 3 | 8.8 |
| 120202.5L031.1X | 403 405 95 | 24 | 3 | 8.8 |
| 120202.5L011.2X | 403 405 95 | 24 | 3 | 8.8 |
| 120202.5L021.2X | 403 405 95 | 24 | 3 | 8.8 |
| 120202.5L031.2X | 403 405 95 | 24 | 3 | 8.8 |
| 120202.5L011.3X | 403 405 95 | 24 | 3 | 8.8 |
| 120202.5L021.3X | 403 405 95 | 24 | 3 | 8.8 |
| 120202.5L031.3X | 403 405 95 | 24 | 3 | 8.8 |
| 120202.5L011.4X | 403 405 95 | 24 | 3 | 8.8 |
| 120202.5L021.4X | 403 405 95 | 24 | 3 | 8.8 |
| 120202.5L031.4X | 403 405 95 | 24 | 3 | 8.8 |



Luminous flux tolerance +/- 10%.

Power tolerance +/- 5%.

Lighting beam, light intensity distribution and light efficiency were examined in accordance with the EN ISO 17025:2005 norm for EN13032 norm series and the LM-79 norm.

Up-to-date product info and General Warranty Terms available on our website www.luglightfactory.com

Detailed information on luminous fluxes and powers for individual indexes are indicated on the product data sheet.

The parameters in the data sheet are given for Ta=25°C.

Colour temperature tolerance +/- 5%.

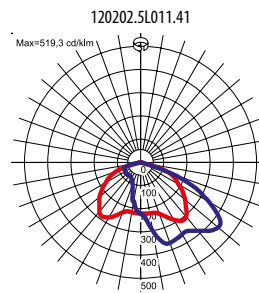
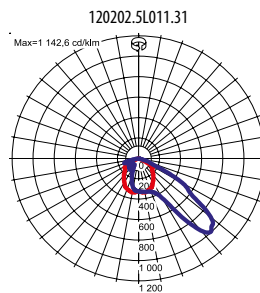
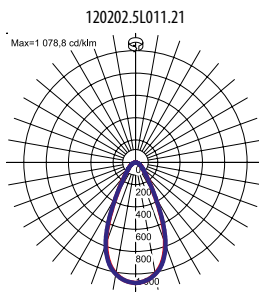
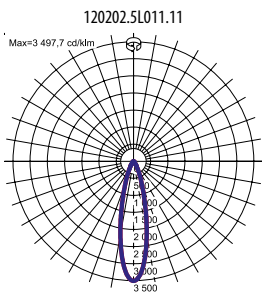
OTHER PICTURES



EASY CONNECT

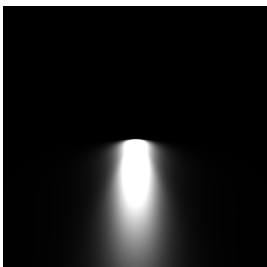


LIGHT BEAM CURVES



WAY OF LIGHTING

120202.5L011.11



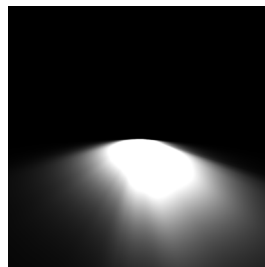
120202.5L011.21



120202.5L011.31



120202.5L011.41



Luminous flux tolerance +/- 10%.

Power tolerance +/- 5%.

Lighting beam, light intensity distribution and light efficiency were examined in accordance with the EN ISO 17025:2005 norm for EN13032 norm series and the LM-79 norm.

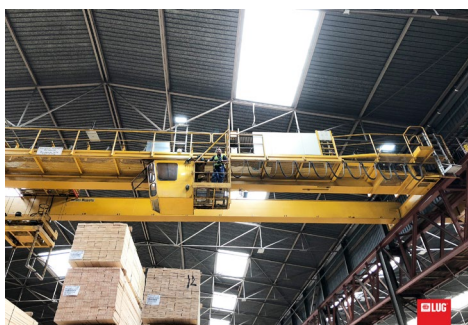
Up-to-date product info and General Warranty Terms available on our website www.luglightfactory.com

Detailed information on luminous fluxes and powers for individual indexes are indicated on the product data sheet.

The parameters in the data sheet are given for $T_a=25^{\circ}\text{C}$.

Colour temperature tolerance +/- 5%.

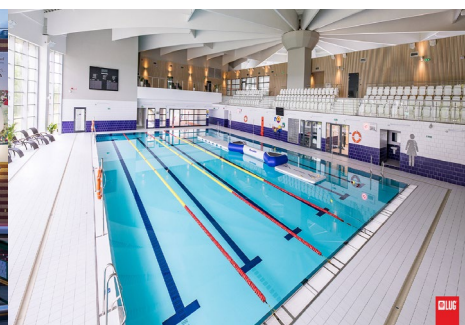
OTHER PROJECTS



Houtgroep van Drimmelen te Zwijndrecht, The Netherlands



Qubus Hotel, Gorzów Wlkp., Poland



Aquapark Trzy Fale, Stupsk, Poland

Luminous flux tolerance +/- 10%.

Power tolerance +/- 5%.

Lighting beam, light intensity distribution and light efficiency were examined in accordance with the EN ISO 17025:2005 norm for EN13032 norm series and the LM-79 norm.

Up-to-date product info and General Warranty Terms available on our website www.luglightfactory.com

Detailed information on luminous fluxes and powers for individual indexes are indicated on the product data sheet.

The parameters in the data sheet are given for Ta=25°C.

Colour temperature tolerance +/- 5%.